

XL TIMING PULLEYS

0.200" Trapezoidal Pitch

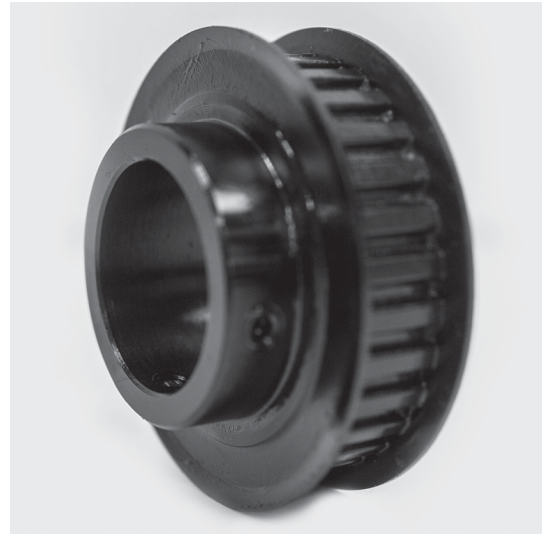
For 3/8" Wide Belts

Hub and Flanges

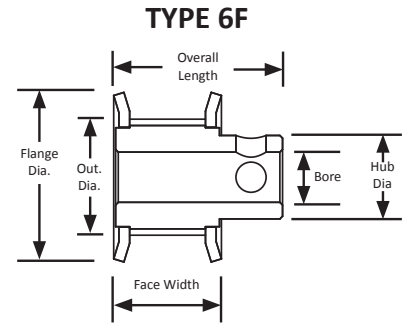
Steel

Black Oxide Plating

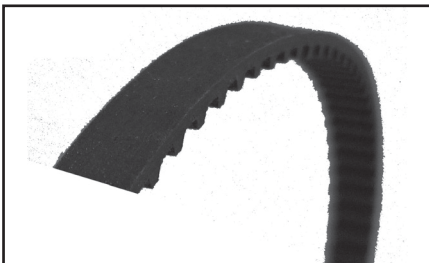
Finished Bore



Part Number	No. of Teeth	Type	Pitch Dia. (in)	Out. Dia. (in)	Flange Dia. (in)	Bore (in)	Face Width (in)	Overall Length (in)	Hub Dia. (in)	Set Screw
10XL037-6FS2	10	6F	0.637	0.617	0.875	0.188	0.563	0.812	0.437	2 x 6-40 @ 90°
10XL037-6FS3	10	6F	0.637	0.617	0.875	0.250	0.563	0.812	0.437	2 x 8-32 @ 90°
11XL037-6FS2	11	6F	0.700	0.680	0.937	0.188	0.563	0.812	0.500	2 x 6-40 @ 90°
11XL037-6FS3	11	6F	0.700	0.680	0.937	0.250	0.563	0.812	0.500	2 x 8-32 @ 90°
12XL037-6FS2	12	6F	0.764	0.744	1.000	0.188	0.563	0.812	0.500	2 x 6-40 @ 90°
12XL037-6FS3	12	6F	0.764	0.744	1.000	0.250	0.563	0.812	0.500	2 x 8-32 @ 90°
12XL037-6FS4	12	6F	0.764	0.744	1.000	0.313	0.563	0.812	0.500	2 x 8-32 @ 90°
14XL037-6FS3	14	6F	0.891	0.871	1.094	0.250	0.563	0.812	0.563	2 x 8-32 @ 90°
14XL037-6FS4	14	6F	0.891	0.871	1.094	0.313	0.563	0.812	0.563	2 x 8-32 @ 90°
15XL037-6FS3	15	6F	0.955	0.935	1.188	0.250	0.563	0.812	0.625	2 x 8-32 @ 90°
15XL037-6FS4	15	6F	0.955	0.935	1.188	0.313	0.563	0.812	0.625	2 x 8-32 @ 90°
15XL037-6FS5	15	6F	0.955	0.935	1.188	0.375	0.563	0.812	0.750	2 x 8-32 @ 90°
15XL037-6FS6	15	6F	0.955	0.935	1.188	0.500	0.563	0.812	0.750	2 x 8-32 @ 90°
16XL037-6FS3	16	6F	1.019	0.999	1.250	0.250	0.563	0.812	0.688	2 x 8-32 @ 90°
16XL037-6FS4	16	6F	1.019	0.999	1.250	0.313	0.563	0.812	0.688	2 x 8-32 @ 90°
16XL037-6FS5	16	6F	1.019	0.999	1.250	0.375	0.563	0.812	0.688	2 x 8-32 @ 90°
18XL037-6FS3	18	6F	1.146	1.126	1.375	0.250	0.563	0.812	0.812	2 x 8-32 @ 90°
18XL037-6FS4	18	6F	1.146	1.126	1.375	0.313	0.563	0.812	0.812	2 x 8-32 @ 90°
18XL037-6FS5	18	6F	1.146	1.126	1.375	0.375	0.563	0.812	0.812	2 x 8-32 @ 90°
18XL037-6FS6	18	6F	1.146	1.126	1.375	0.500	0.563	0.812	0.812	2 x 8-32 @ 90°



The XL pitch is an imperial pitch which is based on the "inch" system of measurement. The imperial pitch tooth profile is a commonly found profile and is trapezoidal in shape. Imperial pitch pulley part numbers can tell you a great deal about the pulley including the number of teeth, pitch, belt width, unit of measure, appearance, material, and bore size. For more information on part numbers and their meaning, see page 441.



For matching XL pitch belts, see page 187.



For XL pitch pulley stock and flanges, see page 258.